

THE CHAMELEON'S COVER

BEING KNOWN



TODAY'S QUESTIONS

When is the last time you disguised yourself?

How do you change when you engage with the world of women?

When did shame first show up in your story? Who put it there? Were they wrong?

PSALM 139:23-24

Search me, O God, and know my heart!

Try me and know my thoughts

And see if there be any grievous way in me,
and lead me in the way everlasting!

**IN ORDER TO BE
LOVED AND, AS A
RESULT, MATURE,
WE MUST FIRST BE
SEEN BY ANOTHER.**





**WHAT
EXACTLY
WAS PETER
DENYING?**

**LUKE
22:31-34
MATTHEW
26: 69-75**

THERE'S MORE AT STAKE THAN WE REALIZED.



Experience.

In his denial, Peter amputated his previous experiences from his current reality, leaving part of his heart homeless.

Friends.

Within this group, the most important relationship of his life was Jesus Christ, who had rescued him from an average life.

Belief in purpose.

Evidenced by his later commitment to return to fishing, he was unable to see what was declared had been determined.

KEY VERSES

Deuteronomy 30:15-20

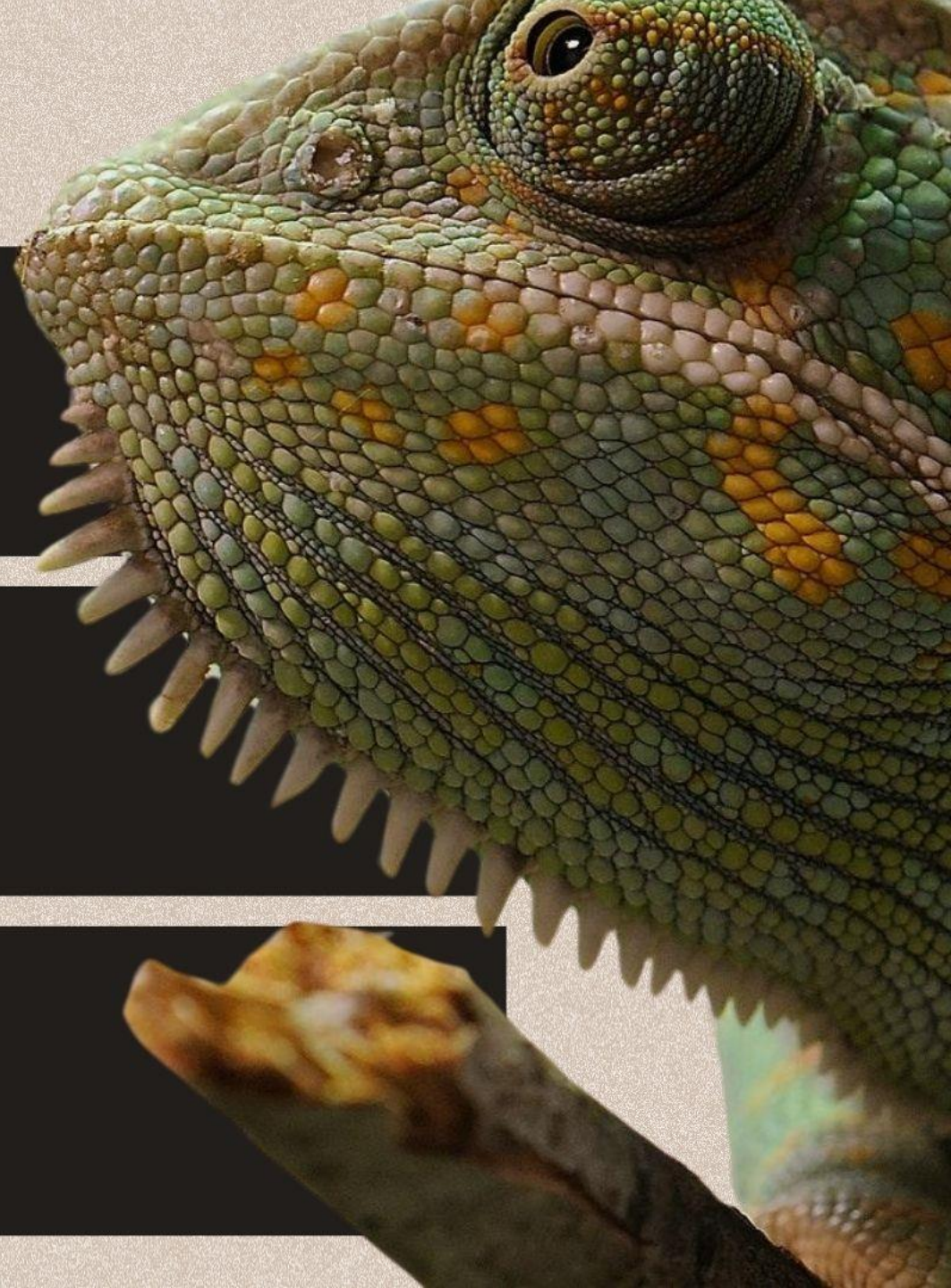
I call heaven and earth to witness against you today, that I have set before you life and death, blessing and curse. Therefore choose life

Proverbs 19:21

Many are the plans in the mind of a man, but it is the purpose of the Lord that will stand.

1 Samuel 16:7

For the LORD sees not as man sees: man looks on the outward appearance, but the LORD looks on the heart.”





HEAD



VIGILENT



CONTROL



URGENCY



RELIEF

REACTIVE



HEART



VULNERABLE



CHARACTER



INTENTIONALITY




RESULTS

RESPONSIVE



**GOD DESIRES TO BE
CHARITABLE TO ALL
PARTS OF OUR STORY,**

**NOT JUST THE PARTS
WE ARE PROUD OF.**



**ACCEPTANCE
WITHOUT
DISCLOSURE IS
FANTASY.**



A MESSAGE OF HOPE

ACCEPTANCE IS AVAILABLE IN THIS
COMMUNITY.

ETERNAL HOPE - ETERNAL HOPE - ETERNAL HOPE